



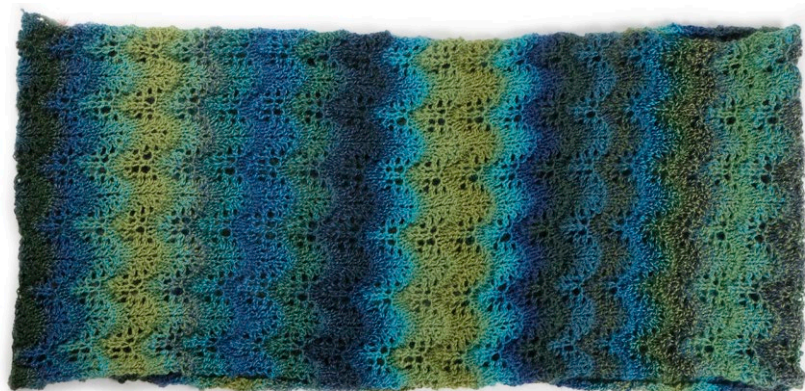
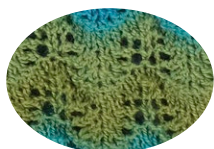
Größe: ca. 150 cm x 28 cm (rund)



Material: 200 g der Lenz ist da Fb 2136 „Crazy Zauberball“ (75 % Schurwolle sw, 25 % Polyamid, LL = 420 m/100 g), Schnellstricknadeln Nr 4 oder Rundstricknadeln Nr 4, 60 cm lang.

Ajourmuster: siehe Zeichnung. M teilbar durch 11 + 2 Rdm. Den MS in der Breite 6 x wdh. Den MS in der Höhe von der 1. bis 10. R stets wdh. Es sind die Hin- und Rück-R gez.

Ajourmuster

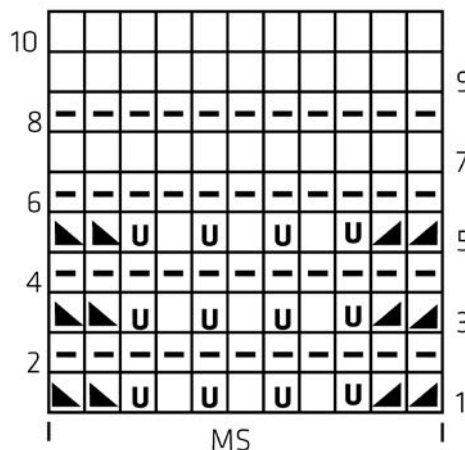


Maschenprobe im Ajourmuster mit Nd Nr 4: 24 M und 30 R = 10 x 10 cm






Ausführung: 68 M mit offenem Anschl anschl und zwischen den Rdm im Ajourmusterstr. Nach ca. 150 cm (nach einem vollendeten MS) die M stilllegen und mit den Anschlag-M im Maschenstich zu einem Kreis (Loop) verbinden.

Fertigstellung: Die Fäden vernähen. Den Loop-Schal nicht spannen oder dämpfen, damit die Crash-Optik erhalten bleibt.

Ajourmuster






Zeichenerklärung zur Strickschrift

-  = re M
-  = li M
-  = Umschlag
-  = 2 M re zus str
-  = 1 Überzug (1 M abh, 1 M re str, die abgehob. M überziehen)

Abkürzungen

- abh = abheben
- anschl = anschlagen
- Fb = Farbe
- gez = gezeichnet
- li = links
- LL = Lauflänge
- M = Masche
- MS = Mustersatz
- Nd = Nadel
- R = Reihe
- Rdm = Randmasche
- re = rechts
- str = stricken
- wdh = wiederholen
- zus = zusammen

Schwierigkeit

-  einfach
-  schwierig
-  sehr schwierig



761



Lace Patterned Cowl

Design: Brigitta Essl

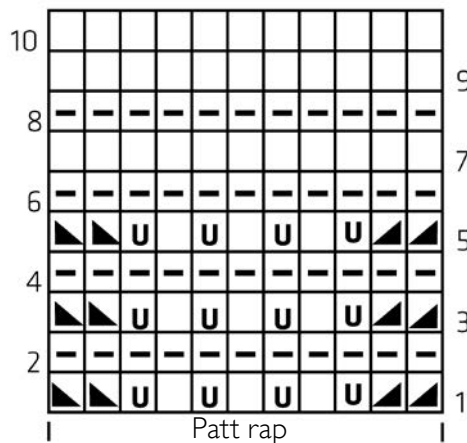


Tension: 24 sts and 30 rows to 10 cm, measured over lace pattern using 4 mm needles.

Lace pattern: Sts divisible by 11 + 2 edge sts, rep Rows 1 - 10 throughout.

Scarf: Using 4mm knitting needles and waste yarn, cast on 68 sts (includes edge sts, which are not included on chart). Break yarn. Join in main yarn, beg and ending rows as indicated and repeating the 11-st patt rep between edge sts 6 times across each row. Cont in patt to 150 cm (45 full patt reps). Slip sts from 1st row onto needle, remove waste yarn, sew cast on sts to sts of last row to form a loop.

Lace pattern



Explanations for Knitting Chart

- = K
- = Yfwd
- = Sl, kl, pssso
- = p
- = k2tog

Abbreviations

- beg = beginning
- cont = continue/continuously
- k = knit
- k2tog = knit 2 together
- p = purl
- patt = pattern
- pssso = pass slip stitch(es) over
- rep = repeat
- sl = slip
- Yfwd = yarn forward

Difficulty

- = easy
- = intermediate
- = difficult

Finished size: 150 cm by 28 cm



Yarn: 200 gm Color 2136 „Crazy Zauberball” (750 % Wool, 25 % Polyester, Length 420 m/100 gm)

Needles: 1 Pair 4mm knitting needles or 4 mm circular needles, 60 cm long.

Lace pattern

