



Größe: 150 cm x 55 cm

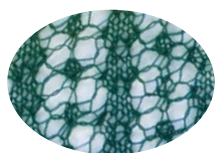


Material: 100 g Evergreen Fb 2168 „Lace Ball 100“ (100 % Schurwolle Merino sw, LL = 800 m/100 g), Rundstricknadeln Nr. 3, 80 cm lang, 1 Reihenzähler, Maschenmarkierer.

Strickschrift: Die 1. - 49. R 1 x arb. Dann nach dem Schema mit den Zun entsprechend weiter arb und diese wie ab R 9 gezeigt ins Muster einfügen, dabei den MS dazwischen insgesamt 7 x arb. (Die R 9 und 11 sind am Anfang und am Ende gleich, genauso wie R 51. und 53, nur die MS = 8 M werden entsprechend 7 x wiederholt). Insgesamt 86. R stricken, am R-Ende, R-Anfang sowie vor und nach den beiden Mittel-M das Muster weiterführen. Es sind nur die Hin-R gez, in den Rück-R alle M und U li str, die Rdm re. Mit einem Maschenmarkierer die Mitte markieren, von dort wird das Muster gegengleich beendet.

Rdm: immer re str.

Strickschrift



Wellenmuster



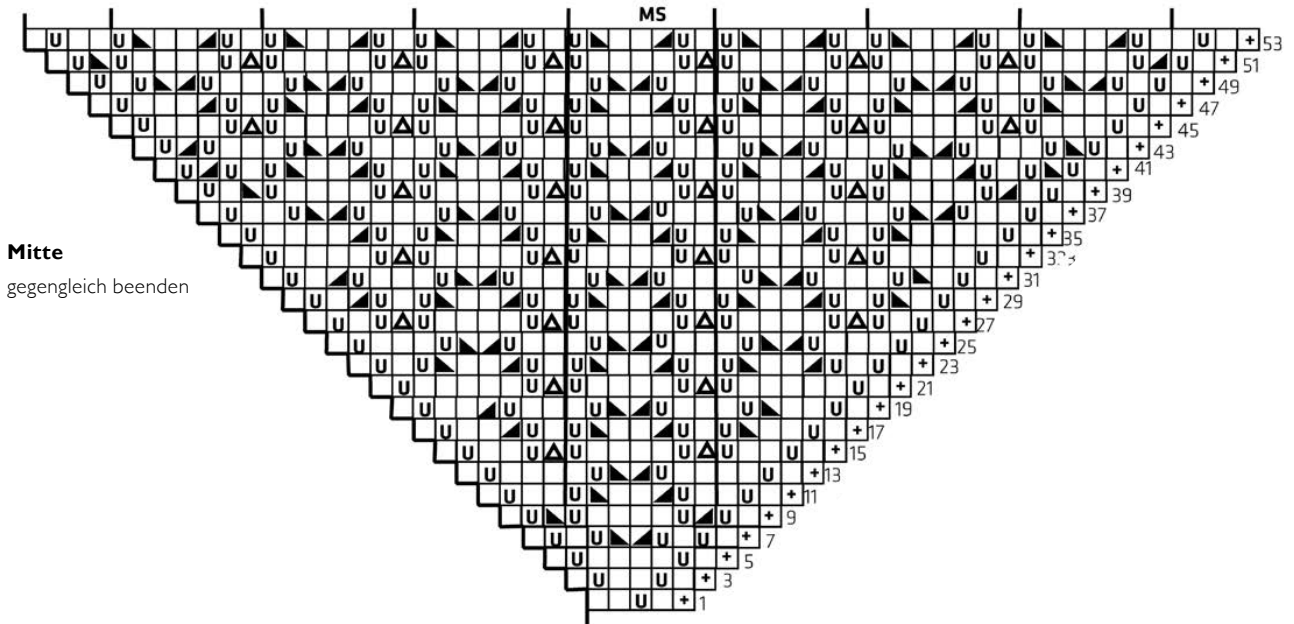
Maschenprobe gl re mit Nd Nr 3: 24 M und 30 R = 10 x 10 cm

Maschenprobe im Lochmuster mit Nd Nr 3, nach dem Spannen: 17 M und 30 R = 10 x 10 cm




Ausführung: 8 M anschl und zwischen den Rdm nach Strickschrift arb, bis Sie gesamt 86 R haben, dabei noch in der letzten R beids je 1 M nach bzw vor der Rdm verschränkt aus dem Querfaden zun (= 180 M). Ab der **87. R** im Wellenmuster str. Die Mittel-M weiter markiert lassen. Das Muster wird nur bis zur Mitte beschrieben, danach das Muster in umgekehrter R-Folge gegengleich beenden. **87. R:** 1 Rdm, 1 M re, 1 U, 87 M re, 1 U, 1 M re = 184 M. **88. R sowie alle nachfolgenden Rück-R:** alle M und U li str. **89. R:** 1 Rdm, 1 M re, 1 U, 1 M re, 1 U, 88 M re, 1 U, 1 M re = 190 M. **91. R:** 1 Rdm, 1 M re, 1 U, 1 M re, * (1 U, 1 M re) 3 x arb, (2 M re zus str) 6 x arb, (1 U, 1 M re) 3 x arb = 1 MS, ab * 5 x wdh, 1 M re, 1 U, 1 M re = 194 M. **93. R:** 1 Rdm, 1 M re, 1 U, 94 M re, 1 U, 1 M re = 198 M. **95. R:** 1 Rdm, 1 M re, 1 U, 3 M re, 5 x MS, 3 M re, 1 U 1 M re = 202 M. **97. R:** 1 Rdm, 1 M re, 1 U, 98 M re, 1 U, 1 M re = 206 M. **99. R:** 1 Rdm, 1 M re, 1 U, 2 M re, 2 M re zus, 1 U, 1 M re, 5 x MS, 1 U, 1 M re, 2 M re zus, 2 M re, 1 U, 1 M re = 210 M. **101. R:** 1 Rdm, 1 M re, 1 U, 102 M re, 1 U, 1 M re = 214 M. **103. R:** 1 Rdm, 1 M re, 1 U, 1 M re, (2 M re zus str) 2 x arb, (1 U, 1 M re) 2 x arb, 5 x MS, (1 U, 1 M re) 2 x arb, (2 M re zus str) 2 x arb, 1 M re, 1 U, 1 M re = 218 M. **105. R:** 1 Rdm, 1 M re, 1 U, 106 M re, 1 U, 1 M re = 222 M. **107. R:** 1 Rdm, 1 M re, 1 U, (2 M re zus str) 3 x arb, (1 U, 1 M re) 3 x arb, 5 x MS, (1 U, 1 M re) 3 x arb, (2 M re zus str) 3 x arb, 1 U, 1 M re = 226 M. **109. R:** 1 Rdm, 1 M re, 1 U, 110 M re, 1 U, 1 M re = 230 M. **111. R:** 1 Rdm, 1 M re, 1 U, 2 M re, (2 M re zus str) 3 x arb, (1 U, 1 M re) 3 x arb, 5 x MS, (1 U, 1 M re) 3 x arb, (2 M re zus str) 3 x arb, 2 M re, 1 U, 1 M re = 234 M. **113. R:** 1 Rdm, 1 M re, 1 U, 114 M re, 1 U, 1 M re = 238 M. **115. R:** 1 Rdm, 1 M re, 1 U, 2 M re, 1 U, (2 M re zus str) 4 x arb, (1 U, 1 M re) 3 x arb, 5 x MS, (1 U, 1 M re) 3 x arb, (2 M re zus str) 4 x arb, 1 U, 2 M re, 1 U, 1 M re = 242 M. **117. R:** 1 Rdm, 1 M re, 1 U, 118 M re, 1 U, 1 M re = 246 M. **119. R:** 1 Rdm, 1 M re, 1 U, 4 M re, 1 U, (2 M re zus str) 4 x arb, (1 U, 1 M re) 3 x arb, 5 x MS, (1 U, 1 M re) 3 x arb, (2 M re zus str) 4 x arb, 1 U, 4 M re, 1 U, 1 M re = 250 M. **121. R:** 1 Rdm, 1 M re, 1 U, 122 M re, 1 U, 1 M re = 254 M. **123. R:** 1 Rdm, 1 M re, 1 U, 2 M re, (1 U, 1 M re) 2 x arb, (2 M re zus str) 5 x arb, (1 U, 1 M re) 3 x arb, 5 x MS, (1 U, 1 M re) 3 x arb, (2 M re zus str) 5 x arb, (1 U, 1 M re) 2 x arb, 2 M re, 1 U, 1 M re = 258 M. **125. R:** 1 Rdm, 1 M re, 1 U, 126 M re, 1 U, 1 M re = 262 M. **127. R:** Rdm, 1 M re, 1 U, 4 M re, (1 U, 1 M re) 2 x arb, (2 M re zus str) 5 x arb, (1 U, 1 M re) 3 x arb, 5 x MS, (1 U, 1 M re) 3 x arb, (2 M re zus str) 5 x arb, (1 U, 1 M re) 2 x arb, 4 M re, 1 U, 1 M re (=266 M). **129. R:** 1 Rdm, 1 M re, 1 U, 130 M re, 1 U, 1 M re = 270 M. **131. R:** 1 Rdm, 1 M re, 1 U, 3 M re, 7 x MS, 3 M re, 1 U, 1 M re = 274 M. **133. R:** 1 Rdm, 1 M re, 1 U, 134 M re, 1 U, 1 M re = 278 M. Jetzt alle M locker abk, dafür 2 M re str, * die rechte M über die linke M ziehen, diese M wieder auf die li Nadel legen, 2 M re str, ab * stets wdh bis nur eine M übrig ist. Faden abtrennen und vernähen.

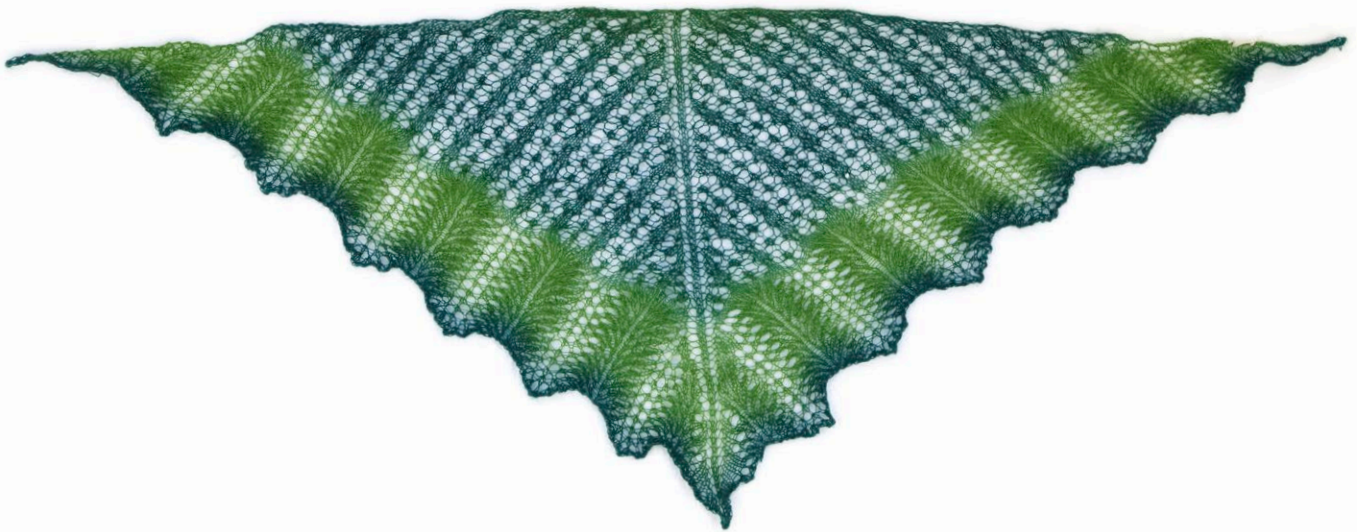
Fertigstellung: Das Tuch spannen und unter feuchten Tüchern trocknen.

Strickschrift



Zeichenerklärung zur Strickschrift




+ = Rdm	 = 2 M re zus str
U = re M	 = 3 M überz zus str (2 M
U = Umschlag	abh, 1 M re str, die
 = 1 Überzug (1 M re abh,	abgehob. M überziehen)
	1 M re str, die abgehob
	M überziehen)



Abkürzungen

abh = abheben	Nd = Nadel
abk = abketten	Nr = Nummer
anschl = anschlagen	R = Reihe
arb = arbeiten	Rdm = Randmasche
beids = beidseitig	re = rechts
Fb = Farbe	str = stricken
gez = gezeichnet	U = Umschlag
gl = glatt	überz = Überzogen
li = links	wdh = wiederholen
LL = Lauflänge	zun = zunehmen
M = Masche	zus = zusammen
MS = Mustersatz	

Schwierigkeit

	einfach
	schwierig
	sehr schwierig



Finished Size: 150 cm by 55 cm

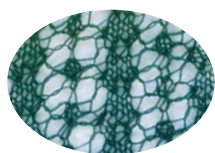


Yarn: 100 gm Color 2168 "Lace Ball 100"
(100 % Merino sw, length 800 m/100 gm)

Needles: 3mm circular needles 80 cm long; Markers

Lace Pattern Chart: Pattern repeat is 7 sts and 21 rows. Work Rows 1 to 49 of chart once, then cont following chart as established (beg of Row 51 is the same as Row 9, beg of Row 53 is the same as Row 11, etc.), increasing 4 sts each RS row, and taking incs into pattern. Chart shows RS rows only; at WS rows purl all sts and extra loops from previous rows. Chart also shows only first half of the rows. Work to end of chart (center), then work back, making sure to work sts after the center in mirror image of the first half of the row (for example, k2tog on first half of chart is worked sll, kl, pssso on second half of the chart as printed). Work pattern as shown, until 86 rows have been completed, inc 1 st at each end in last row – 180 sts.

Strickschrift



Wave Pattern



Tension: 24 sts and 30 rows to 10 cm measured over Stockinette Stitch using 3 mm needles. 17 sts and 30 sts to 10 cm after blocking measured over lace pattern using 3 mm needles.

To make: Using 3mm circular needle cast on 8 sts. **Row 1:** Edge st, kl, yfwd, k4, yo, kl, edge st = 10 sts (underlined sts are center 2 sts). **Row 2:** and all WS Rows: Purl all sts and extra loops from previous rows.

Row 3: Edge st, Kl, yfwd, k2, yfwd, k2, yfwd, k2, yfwd, kl, edge st = 14 sts. **Row 5:** Edge st, kl, yfwd, k4, yfwd, k2, yfwd, k4, yfwd, kl, edge st = 18 sts. **Row 7:** Edge st, Kl, yfwd, kl, yfwd, k2tog, sll, kl, pssso, yfwd, kl, yfwd, k2 yfwd, kl, yfwd, k2tog, sll, kl, pssso, yfwd, kl, yfwd, kl, edge st = 22 sts. **Row 9:** Edge st, kl, yfwd, k2tog, yfwd, k4, yfwd, sll, kl, pssso, yfwd, k2, yfwd, k2tog, yfwd, k4, yfwd, sll, kl, pssso, yfwd, kl, edge st = 26 sts.

Cont work, following chart as set and making sure to work sts after the center in mirror image of the first half of the row. Work until 86 rows have been completed, inc 1 st at each end in last WS row = 180 sts.

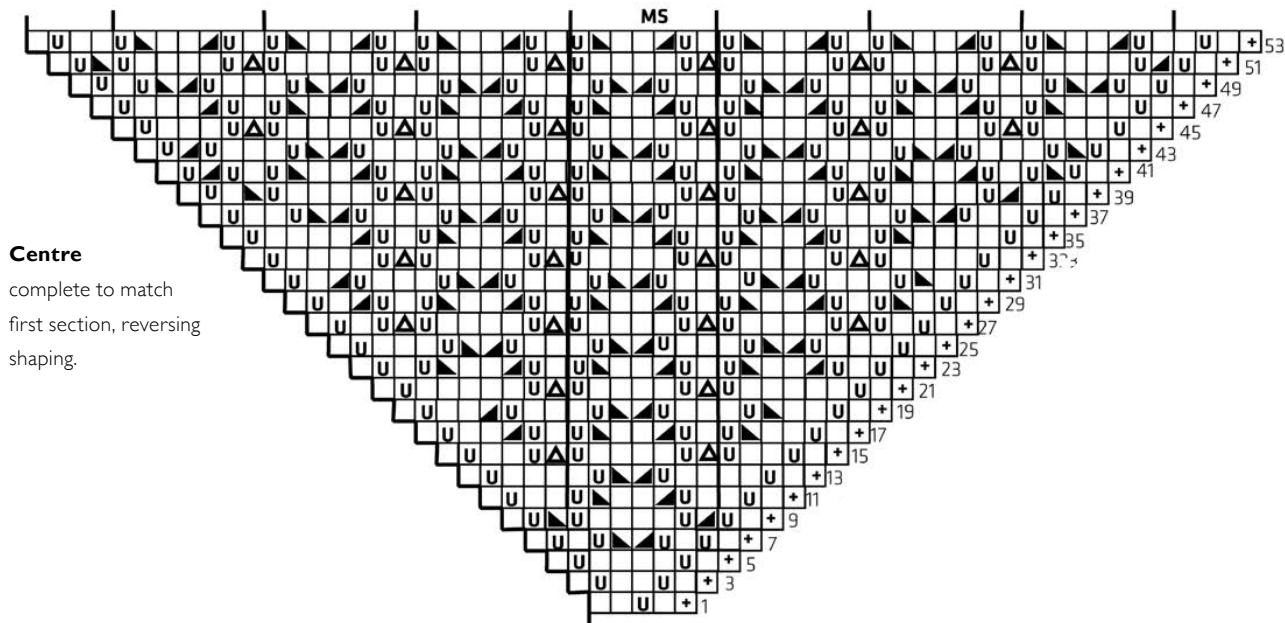
Wave Pattern Border: Cont work in WWave Pattern. Place marker at center sts of patt. Pattern is described to center of work, then second half of row is worked to match first half, reversing shaping as follows: **Row 87 (RS):** Edge st, kl, yfwd, k87, yfwd, kl, slip center marker and work first half of row in reverse order = 184 sts. **Row 88 and all foll WS rows:** P all sts and extra loops from previous row. **Row 89:** Edge st, kl, yfwd, kl, yfwd, k88, yfwd, kl, slip marker and work in reverse order = 190 sts. **Row 91:** Edge st, kl, yfwd, kl, * (yfwd, kl) 3x, (k2tog) 6x, (yfwd, kl) 3x; rep from * 5x, kl, yfwd, kl, slip marker and work in reverse order = 194 sts. **Row 93:** Edge st, kl, yfwd, k94, yfwd, kl, slip marker and work in reverse order = 198 sts. **Row 95:** Edge st, kl, yfwd, k3, * (yfwd, kl) 3x, (k2tog) 6x, (yfwd, kl) 3x; rep from 5x, k3, yfwd, kl, slip marker and work in reverse order = 202 sts. **Row 97:** Edge st, kl, yfwd, k98, yfwd, kl, slip marker and work in reverse order = 206 sts. **Row 99:** Edge st, kl, yfwd, k2, k2tog, yfwd, kl, * (yfwd, kl) 3x, (k2tog) 6x, (yfwd, kl) 3x; rep from * 5x, yfwd, kl, k2tog, k2, yfwd, kl, slip marker and work in reverse order = 210 sts. **Row 101:** Edge st, kl, yfwd, kl02, yfwd, kl, slip marker and work in reverse order = 214 sts. **Row 103:** Edge st, kl, yfwd, kl, (k2tog) 2x, (yfwd, kl) 2x, * (yfwd, kl) 3x, (k2tog) 6x, (yfwd, kl) 3x; rep from * 5x, (yfwd, kl) 2x, (k2tog) 2x, kl, yfwd, kl, slip marker and work in reverse order = 218 sts. **Row 105:** Edge st, kl, yfwd, kl06, yfwd, kl, slip marker and work in reverse order = 222 sts. **Row 107:** Edge st, kl, yfwd, (k2tog) 3x, (yfwd, kl) 3x, * (yfwd, kl) 3x, (k2tog) 6x, (yfwd, kl) 3x; rep from * 5x, (yfwd, kl) 3x, (k2tog) 3x, yfwd, kl, slip marker and work in reverse order = 226 sts. **Row 109:** Edge st, kl, yfwd, kl10, yfwd, kl, slip marker and work in reverse order = 230 sts. **Row 111:** Edge st, kl, yfwd, kw, (k2tog) 3x, (yfwd, kl) 3x, * (yfwd, kl) 3x, (k2tog) 6x, (yfwd, kl) 3x; rep from * 5x, (yfwd, kl) 3x, (k2tog) 3x, k2, yfwd, kl, slip marker and work in reverse order = 234 sts. **Row 113:** Edge st, kl, yfwd, kl14, yfwd, kl, slip marker and work in reverse order = 238 sts. Row 115: Edge st, kl, yfwd, k2, yfwd, (k2tog) 4x, (yfwd, kl) 3x, * (yfwd, kl) 3x, (k2tog) 6x, (yfwd, kl) 3x; rep from * 5x, (yfwd, kl) 3x, (k2tog) 4x, yfwd, k2, yfwd, kl, slip marker and work in reverse order = 242 sts. **Row 117:** Edge st, kl, yfwd, kl18, yfwd, kl, slip marker and work in reverse order = 246 sts. **Row 119:** Edge st, kl, yfwd, k4, yfwd, (k2tog) 4x, (yfwd, kl) 3x, * (yfwd, kl) 3x, (k2tog) 6x, (yfwd, kl) 3x; rep from * 5x, (yfwd, kl) 3x, (k2tog) 4x, yfwd, k4, yfwd, kl, slip marker and work in reverse order = 250 sts. **Row 121:** Edge st, kl, yfwd, kl22, yfwd, kl, slip marker and work in reverse order = 254 sts. **Row 123:** Edge st, kl, yfwd, k2, (yfwd, kl) 2x, (k2tog) 5x, (yfwd, kl) 3x, * (yfwd, kl) 3x, (k2tog) 6x, (yfwd, kl) 3x; rep from * 5x, (yfwd, kl) 3x, (k2tog) 5x, (yfwd, kl) 2x, k2, yfwd, kl, slip marker and work in reverse order = 258 sts. **Row 125:** Edge st, kl, yfwd, kl26, yfwd, kl, slip center marker and work row back in reverse order = 262 sts. **Row 127:** Edge st, kl, yfwd, k4, (yfwd, kl) 2x, (k2tog) 5x, (yfwd, kl) 3x, * (yfwd, kl) 3x, (k2tog) 6x, (yfwd, kl) 3x; rep from * 5x, (yfwd, kl) 3x, (k2tog) 5x, (yfwd, kl) 2x, k4, yfwd, kl, slip marker and work in reverse order = 266 sts. **Row 129:** Edge st, kl, yfwd, kl30, yfwd, kl, slip marker and work in

reverse order = 270 sts. **Row 131:** Edge st, k1, yfwd, k3, * (yfwd, k1) 3x, (k2tog) 6x, (yfwd, k1) 3x; rep from * 7x, k3, yfwd, k1, slip marker and work in reverse order = 274 sts. **Row 133:** Edge st, k1, yfwd, k134, yfwd, k1, slip marker and work in reverse order = 278 sts. Cast off loose-

ly as folls: * Slip knit st over purl st, take st back onto left needle, k2tog; rep from * to end. Fasten off.

Finishing: Pin scarf to desired shape. Place a damp towel over the garments to block. When dry, weave in loose ends.

Chart

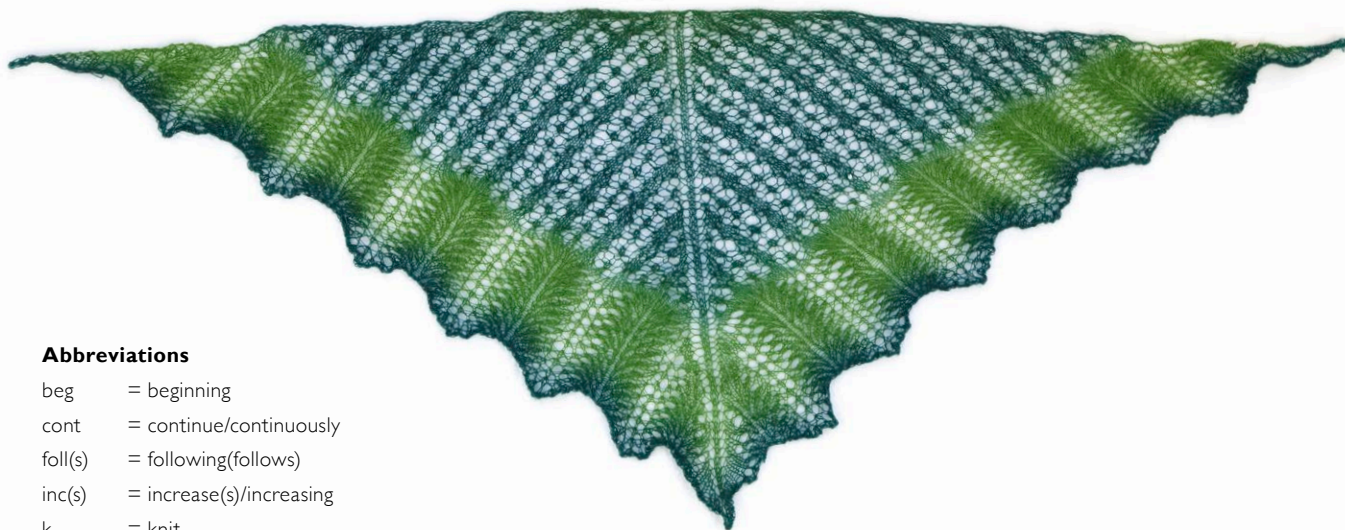


Centre

complete to match first section, reversing shaping.

Key

- | | |
|------------------|------------------|
| = edge st | = K2tog |
| = Yfwd | = Sl2, k1, p2sso |
| = Sl1, k1, p2sso | |



Abbreviations

- beg = beginning
- cont = continue/continuously
- fol(s) = following(follows)
- inc(s) = increase(s)/increasing
- k = knit
- k2tog = knit 2 together
- p = purl
- p2sso = pass slip stitch(es) over
- p2sso = pass 2 slip stitches over
- PU = Pick Up
- rep = repeat
- RS = right side
- sl = slip
- st(s) = stitch(es)
- WS = wrong side
- Yfwd = yarn forward
- yo(s) = yarn over needles/yarn overs

Difficulty

- easy
- intermediate
- difficult