



Finished Size: Approx 20 cm by 170 cm



Yarn: 200 gm Color 1878 ombre "Gradient"
(100 % Merino, length 260 m/100 gm)
Needles: 3.5mm circular needles, 80 cm long

Lace Pattern: Sts divisible by 16 + 13 + 4 edge sts (edge sts are not included in chart). Work Row 1 to 18 **once** only. Chart shows RS only, purl all sts and extra loops from previous row in WS rows. Pattern is worked as foll: Edge st, work first 6 sts of chart, work 16-st patt rep 29 times, work last

St st – Stockinette st: Knit on RS rows, purl on WS rows. **G st – Garter Stitch:** Knit in RS and WS rows. Knit edge sts in RS and WS rows.

Tension: 25 sts and 35 rows to 10 cm, measured over St st using 3.5mm needles.

Scarf: Using 3.5mm circular needles cast on 482 sts. Knit 2 rows in St st, ending with a WS row. Work in short rows as folls: **Next 2 rows:** Knit to last 11 sts (incl edge sts), yfwd, turn, purl to last 11 sts (incl edge sts), yfwd, turn.

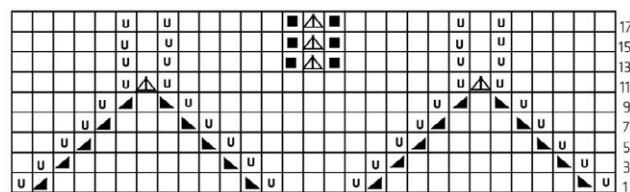
Next 2 rows: Knit to last 10 sts, yfwd, turn, purl to last 10 sts, yfwd, turn. Cont as given, working 10 sts less in each row before turning row until there are 80 sts on needle. Work 2 rows in St st over all 482 sts, knitting tog tbl all extra (yfwd) loops of turning rows with next st, while decreasing 1 st in centre of last row = 481 sts. Beg with Row 1

of Chart, establish patt as folls: **Row 1 (RS):** K2 (edge sts), work first 6 sts of chart, work 16-st patt rep 29 times, work last 7 sts of chart, k2 (edge sts). Previous row establishes patt. Cont in patt until Row 18 has been completed. Work a further 2 rows in G st. Cast off all sts very loosely.

Finishing:








Thread yarn through cast on sts, pull gently to gather sts, so that work forms a circle, fasten off securely. Pin scarf to desired shape. Place a damp towel over the garment to block. When dry, weave in loose ends.

Lace pattern



patt rep

Key

	= k		= Sll, k1, pss0
	= p		= Sll, k2tog, pss0
	= yfwd		= No stitch
	= k2tog		

Abbreviations

approx	= approximate(ly)
cont	= continue/continuously
foll(s)	= following(follows)
incl	= inclusive
G st	= Garter Stitch
k	= knit
k2tog	= knit 2 together
ml	= Make 1 stitch
p	= purl
patt	= pattern
pss0	= pass slip stitch(es) over
rep	= repeat
RS	= right side
sl	= slip
st(s)	= stitch(es)
St st	= Stockinette stitch (UK: stocking stitch)
tbl	= through back loop
tog	= together
WS	= wrong side
yfwd	= yarn forward

Difficulty

	easy
	intermediate
	difficult

