

375

Hat White Cloud
Design: Irene Lindörfer

Garter stitch



Gauge garter stitch with needle 20 mm:

2.6 sts and 6 rds = 10 x 10 cm (4")

Stitch counter x 0.26

Row counter x 0.6

Instructions:

CO 15 sts on the circular needle and join for working in the rd, being careful not to twist. Mark the beg of rd with a contrasting yarn.

Knit in garter st in rds.

After 38 cm (18¾") from CO edge, BO all sts.

Weave in all ends. On top, the hat remains open.

Difficulty



easy



intermediate



difficult

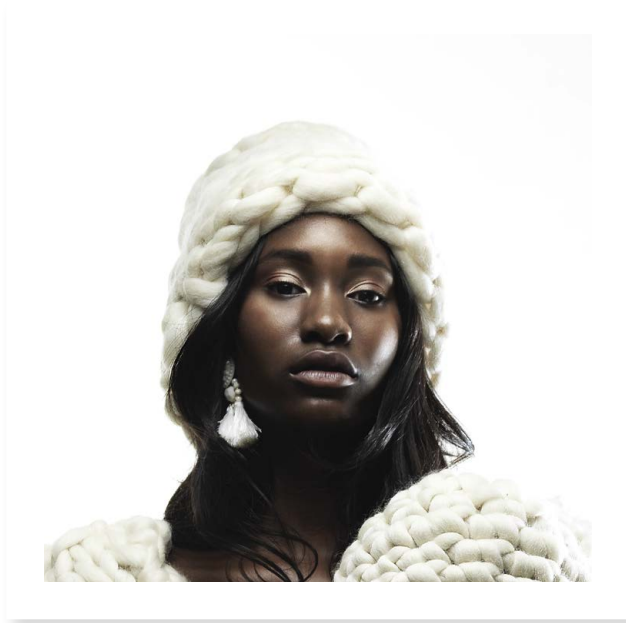
Abbreviations

BO = bind of

CO = cast on

rd(s) = round(s)

st(s) = stitch(es)



Size: Circumference approx. 58 cm (22"), 38 cm (8¾") high



Materials: 500 g "Miss Wool"

(100% merino wool, yardage = 50 m (54 yds.)/

500 g); color: **Off-White** #980, one 60 cm (24")

circular needle 20 mm (US 36)

Garter stitch in rds: Alternate 1 rd knit, 1 rd purl.