



761



Lace Patterned Cowl

Design: Brigitta Essl

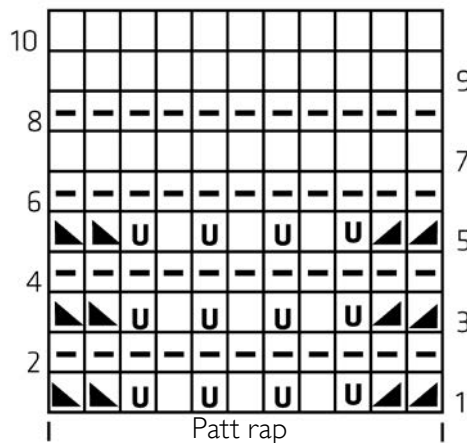


**Tension:** 24 sts and 30 rows to 10 cm, measured over lace pattern using 4 mm needles.

**Lace pattern:** Sts divisible by 11 + 2 edge sts, rep Rows 1 - 10 throughout.

**Scarf:** Using 4mm knitting needles and waste yarn, cast on 68 sts (includes edge sts, which are not included on chart). Break yarn. Join in main yarn, beg and ending rows as indicated and repeating the 11-st patt rep between edge sts 6 times across each row. Cont in patt to 150 cm (45 full patt reps). Slip sts from 1st row onto needle, remove waste yarn, sew cast on sts to sts of last row to form a loop.

Lace pattern



Explanations for Knitting Chart

- = K
- = Yfwd
- = Sl, kl, pssso
- = p
- = k2tog

Abbreviations

- beg = beginning
- cont = continue/continuously
- k = knit
- k2tog = knit 2 together
- p = purl
- patt = pattern
- pssso = pass slip stitch(es) over
- rep = repeat
- sl = slip
- Yfwd = yarn forward

Difficulty

- = easy
- = intermediate
- = difficult

Finished size: 150 cm by 28 cm



**Yarn:** 200 gm Color 2136 „Crazy Zauberball” (750 % Wool, 25 % Polyester, Length 420 m/100 gm)

**Needles:** 1 Pair 4mm knitting needles or 4 mm circular needles, 60 cm long.

Lace pattern

