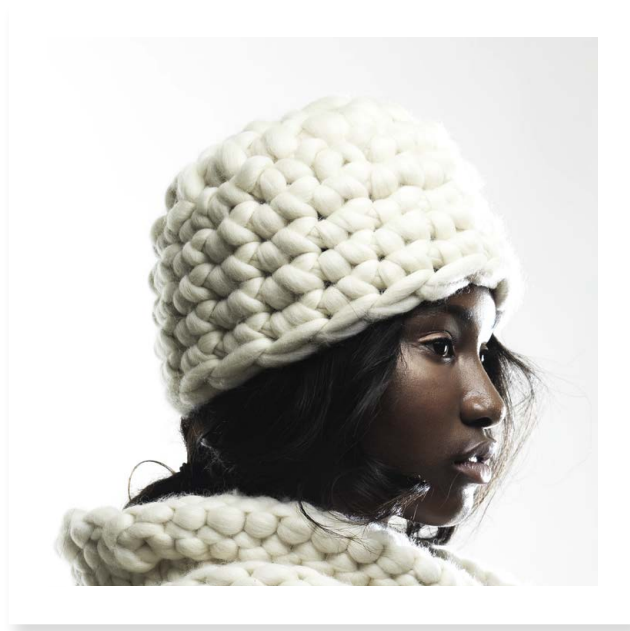


## Crochet pattern



### Gauge sc with crochet hook 20 mm:

3.2 sc and 3.5 rds = 10 x 10 cm (4")

Stitch counter x 0.32

Row counter x 0.35

### Instructions:

6 sc into a magic ring. Mark beg of rd with a contrasting yarn. Tighten the yarn and work in continuous rds.

**Rd 2:** Sc twice into each st around = 12 sc.

**Rd 3:** [Sc into the first st, sc twice into every 2nd st] repeat to end of rd = 18 sc.

**Rds 4 – 8:** Sc around.

Close rd 8 with 1 sl st. Break yarn and weave in ends.

### Difficulty

 easy  
 intermediate  
 difficult

### Abbreviations

rd(s) = round(s)  
 sc = single crochet  
 sl st = slip stitch

**Size:** Circumference approx. 56 cm (22"), 22 cm (8¾") high



### Materials: 500 g "Miss Wool"

(100% merino wool, yardage = 50 m (54 yds.)/500 g); color: **Off-White** #980, one crochet hook 20 mm (S).

**Crochet pattern:** Sc in continuous rounds.

**Increase:** Work 2 sc in 1 sc of the previous rd.